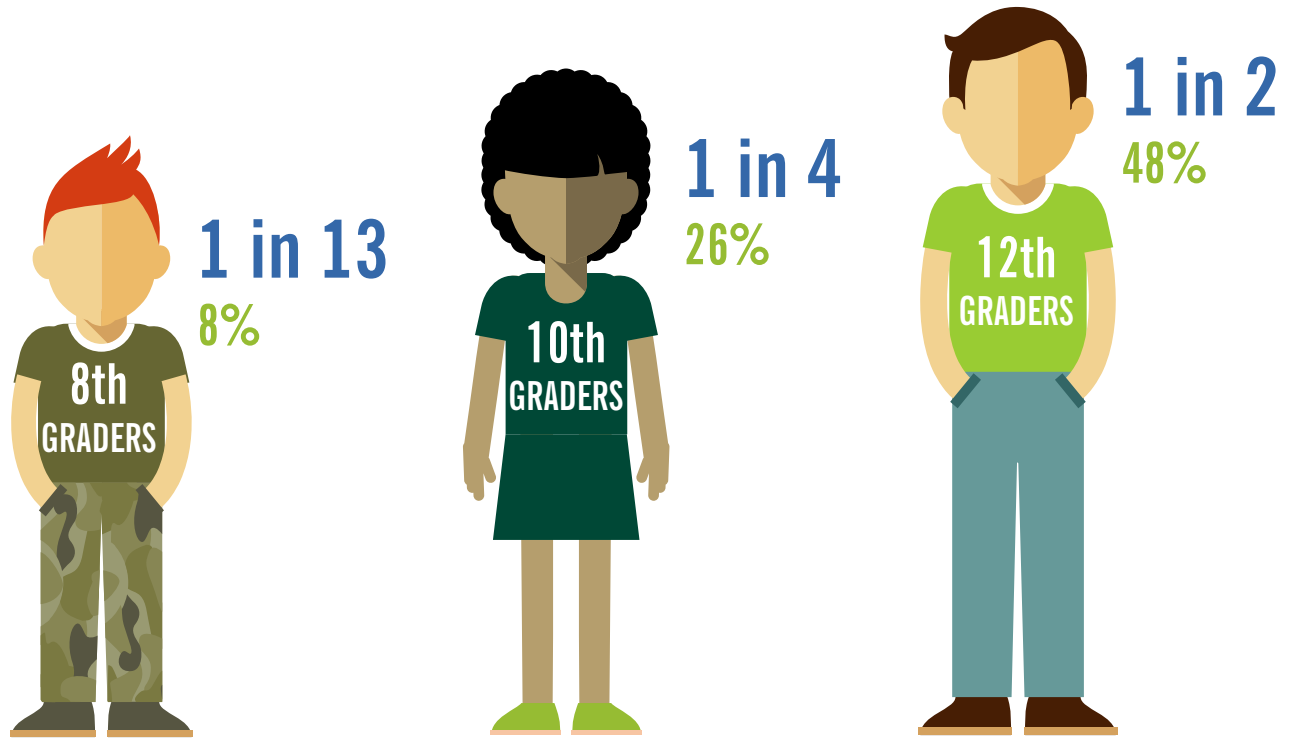
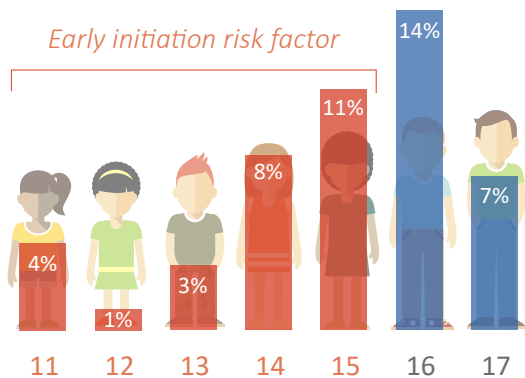


Adolescents Who Have Had Sexual Intercourse



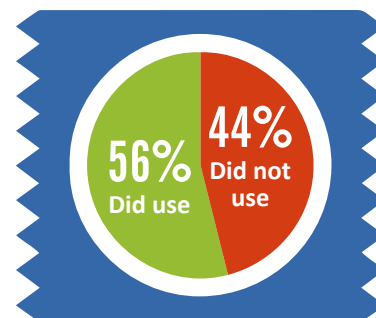
12th Graders

AGE OF FIRST SEXUAL INTERCOURSE



8th, 10th & 12th Graders

WHO USED A CONDOM THE LAST TIME THEY HAD SEXUAL INTERCOURSE

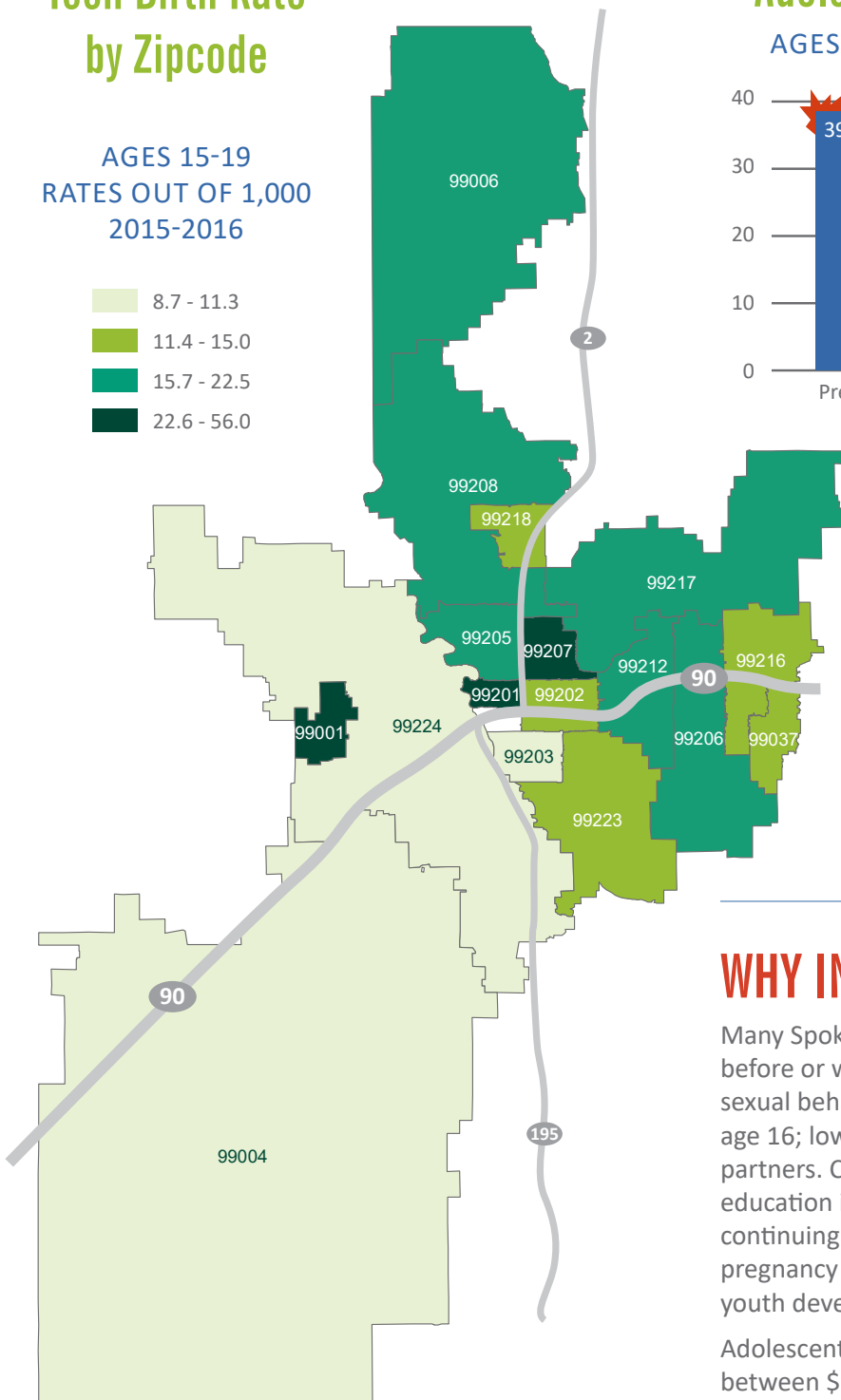
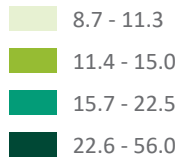


12th Graders NUMBER OF SEXUAL PARTNERS



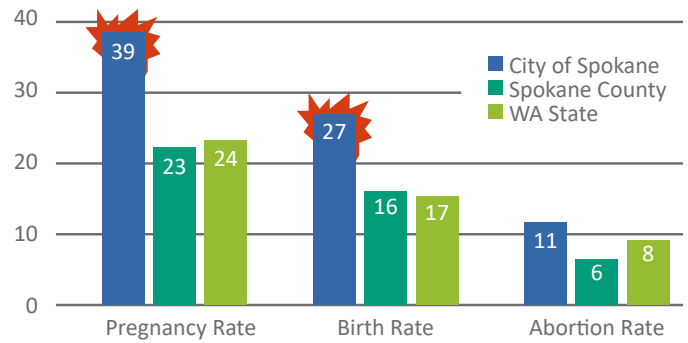
Teen Birth Rate by Zipcode

AGES 15-19
RATES OUT OF 1,000
2015-2016



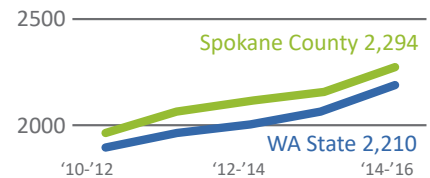
Adolescent Pregnancy and Abortion

AGES 15-19 | RATES OUT OF 1,000 | 2016



Sexually Transmitted Disease

RATES OUT OF 100,000
SPOKANE COUNTY



WHY INVEST IN PREVENTION?

Many Spokane County youth are becoming sexually active before or while in high school and are engaging in risky sexual behaviors including: early sexual initiation, before age 16; low condom-usage; and high numbers of sexual partners. Comprehensive, evidence-based sexual health education in Spokane County beginning before and continuing into high school is needed to prevent teen pregnancy and STDs and support positive youth development.

Adolescent childrearing costs taxpayers in the U.S. between \$9.4 and \$28 billion a year. It is important to continue to **invest** to improve the following:

- Educational outcomes for adolescents;
- Cognitive and behavioral outcomes for children;
- Income for adolescent parents;
- Reliance on public assistance by adolescent parents.

WHERE IS IT MOST CONCERNING?

Spokane County does not exhibit adolescent birth or pregnancy rates higher than the state average, however, when you compare rates across the county, areas of need are easy to identify. Adolescent birth and pregnancy rates in the city of Spokane are most concerning and are considerably higher than those of Spokane County and Washington state. Airway Heights, Hillyard, and downtown Spokane exhibit the highest rates.