



Board of Health

March 27, 2025



SRHD Board of Health

Health Officer's Report

Thursday, March 27, 2025

12:30 p.m.

Francisco R. Velázquez, MD, SM, FCAP

Health Officer

Spokane Regional Health District

I. Communicable Disease Update

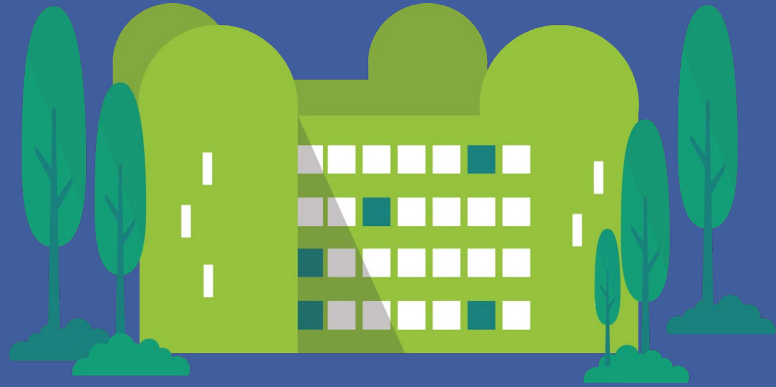
- a. Pertussis
- b. Shigella
- c. Respiratory Illnesses

II. Public Health Update

- a. Measles Outbreak U.S. and Canada

III. Community Collaborations

- a. Quality of Life Survey
- b. Fentanyl Roundtable
- c. Health Occupations Students of America (HOSA)



Communicable Disease Update



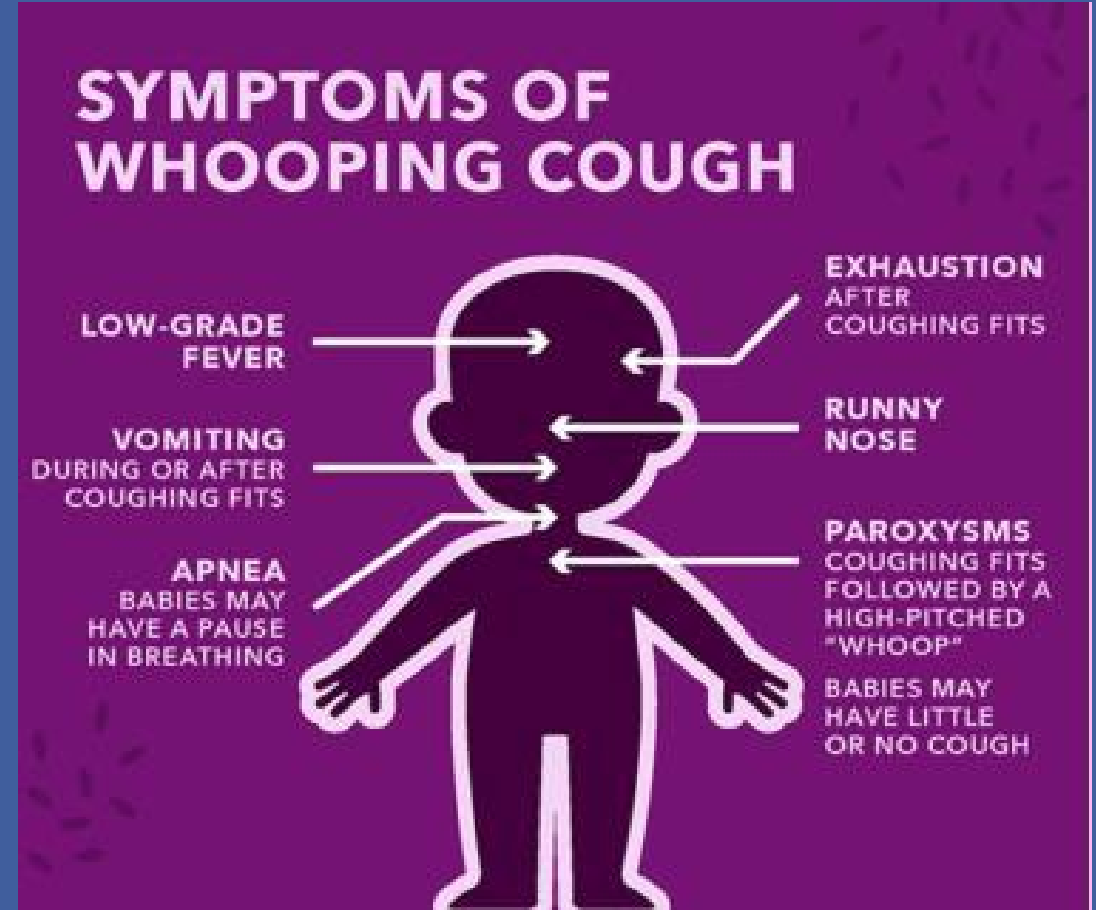
Pertussis

Current Situation in Washington State

There have been a total of 590 confirmed and probable cases reported statewide during 2025 as of 11/28/2024, compared to 80 cases during the same period in 2024 (State Average 85 cases/Year). Multiple jurisdictions have reported increases.

Persons at high risk for pertussis:

- Infants <1 year old (who are at greatest risk for severe disease and death)
- Pregnant women in the last trimester (who may expose infants)
- Healthcare workers with direct patient contact (who may expose infants, pregnant women, or others who have contact with infants or pregnant women)
- Anyone who may expose infants < 1 year old or pregnant women (e.g., childbirth educators, childcare workers, members of a household with infants).

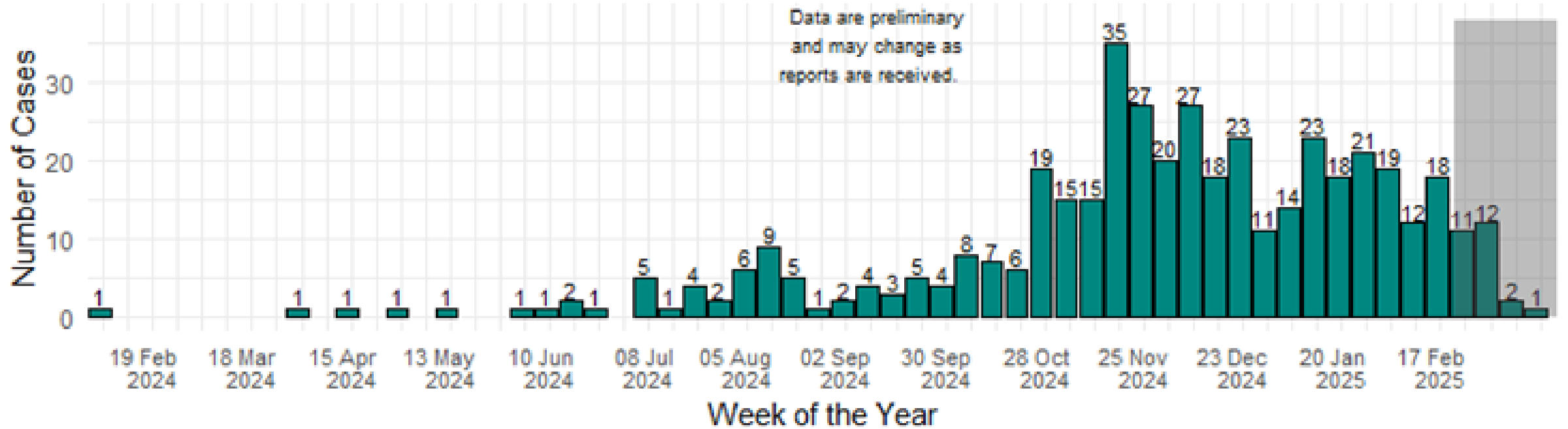


WA State Pertussis Cases by County 2025 weeks 1 - 10

County	Number of Cases	OFM 2023 Population	Rate per 100,000 persons
Spokane	130	554,598	23.4
Clark	101	527,401	19.2
King	75	2,347,795	3.2
Snohomish	75	859,802	8.7
Pierce	39	946,299	4.1
Whatcom	31	235,804	13.1
Yakima	24	261,199	9.2
Kitsap	19	283,206	6.7
Cowlitz	17	113,003	15.0
Thurston	13	303,399	4.3
Island	10	88,148	11.3
Grant	9	103,298	8.7
Kittitas	8	47,300	16.9
Adams	6	21,201	28.3
Skagit	6	132,000	4.5
Klickitat	4	23,257	17.2
Lewis	4	84,076	4.8
Stevens	4	47,350	8.4
Whitman	3	48,097	6.2
Benton	2	215,502	0.9
Chelan	2	81,502	2.5
Skamania	2	12,002	16.7
Walla Walla	2	63,097	3.2
Asotin	1	22,655	4.4
Douglas	1	44,499	2.2
Jefferson	1	33,425	3.0
Pend Oreille	1	13,728	7.3

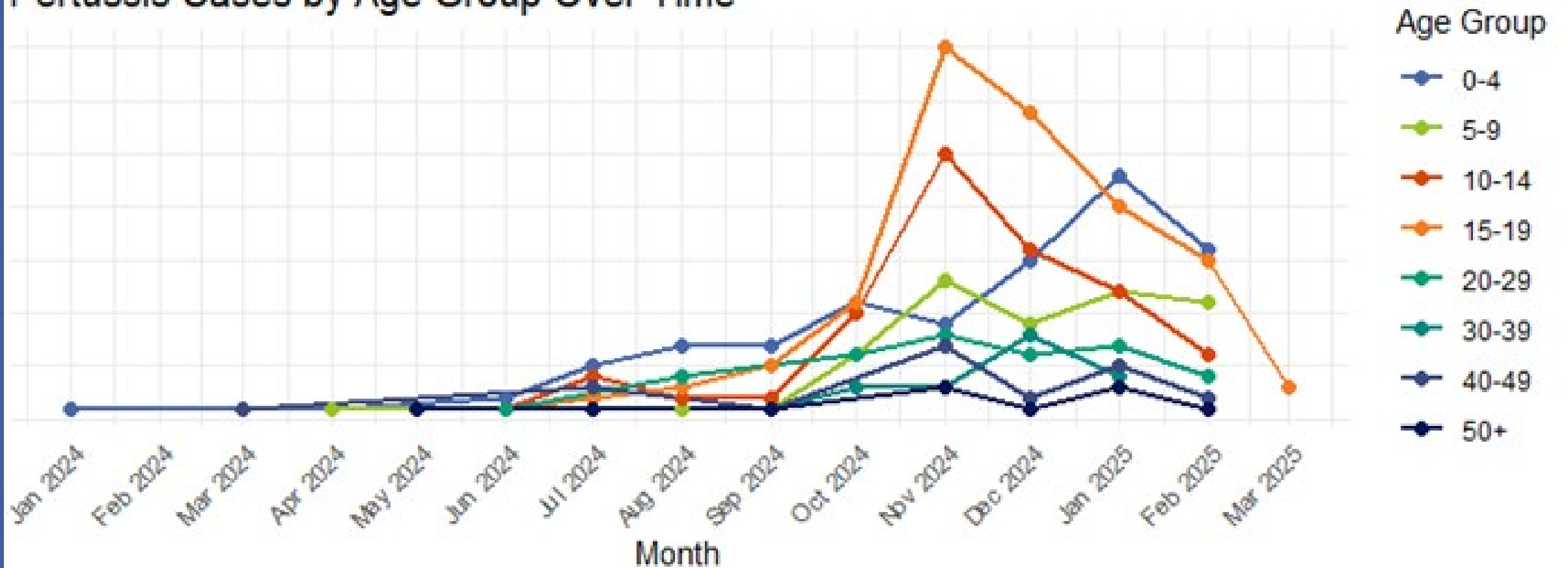
Epidemiological Curve for Pertussis Cases in Spokane County

Lab confirmed, suspected, and probable cases



n = 443 Pertussis Cases; Data aggregated by week based on lab collection date

Pertussis Cases by Age Group Over Time





Shigella

Executive Summary

Total Cases: 40

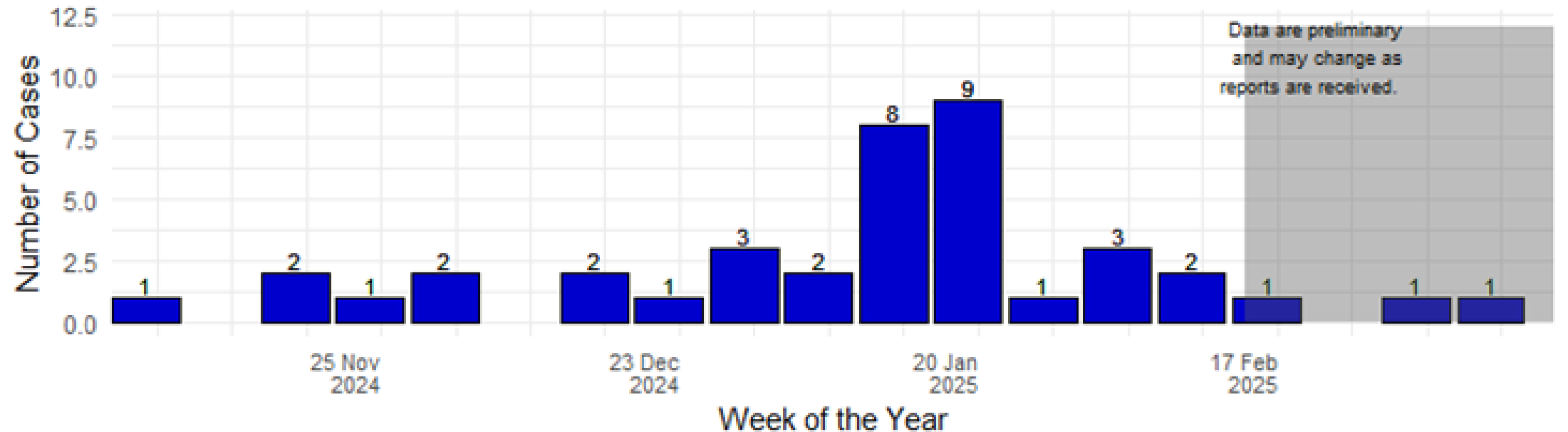
10 cases in 2024

30 cases in 2025

Week of March 9, 2025: new case reported.

Epidemiological Curve for Shigella Cases in Spokane County

Lab confirmed and probable shigella cases



n = 40 Shigella Cases; Data aggregated by week



Respiratory Illness Dashboard

Weekly Emergency Department Visits

Trends

COVID-19



Influenza



RSV



Alert Levels

COVID-19



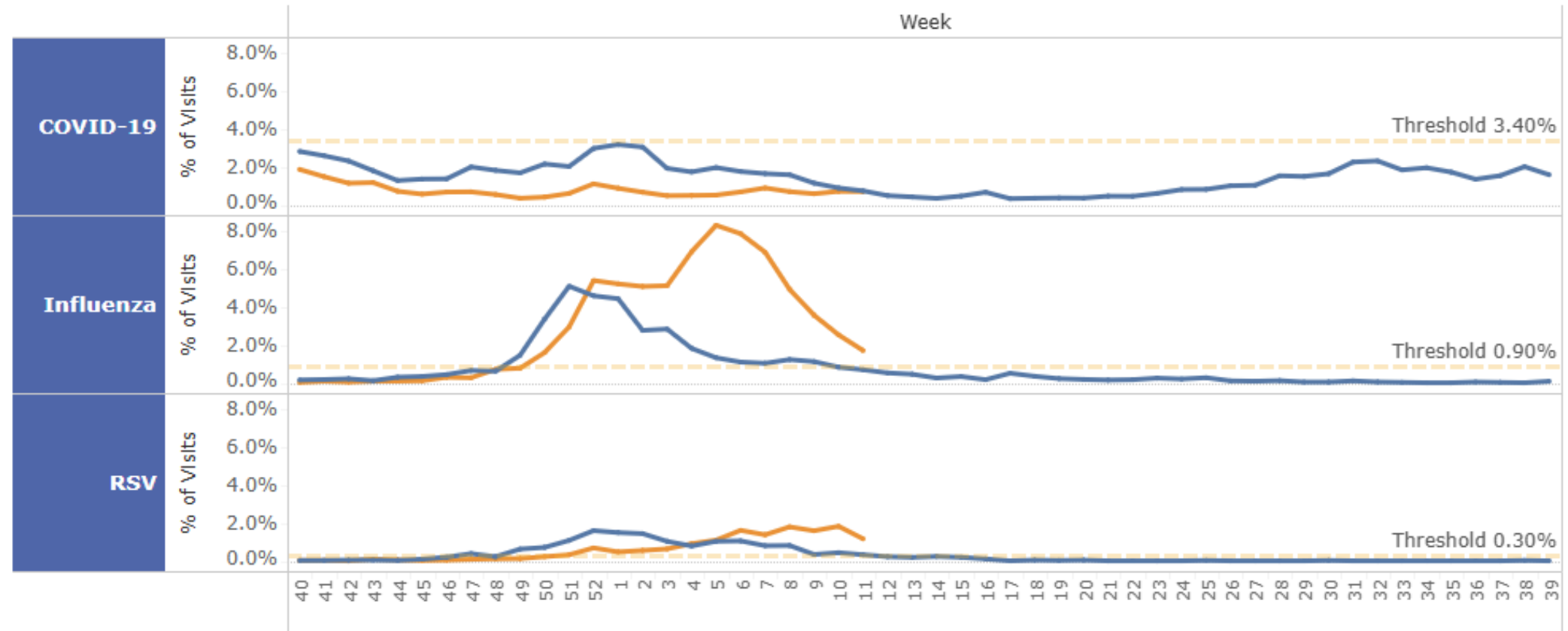
Influenza



RSV



Percent of Weekly ED Visits With Diagnosed Respiratory Illness



Select Season(s)

(Multiple values)

Selected Season(s)

 2023-2024

 2024-2025



Public Health Update



Measles Outbreak U.S and Canada

Measles Cases in 2025

As of March 13, 2025, a total of 301 confirmed* measles cases were reported by 15 jurisdictions:

Alaska, California, Florida, Georgia, Kentucky, Maryland, New Jersey, New Mexico, New York City, New York State, Pennsylvania, Rhode Island, Texas, Vermont, and Washington.

Under 5 years: 103 (34%)
5-19 years: 126 (42%)
20+ years: 63 (21%)
Age unknown: 9 (3%)

There has been 1 confirmed death from measles and 1 death under investigation.

Key Points

- In Canada, 224 measles cases (173 confirmed, 51 probable) and 0 rubella cases have been reported in 2025 ¹.
- 57 new measles cases (28 confirmed, 29 probable) were reported by 2 jurisdictions (Ontario, Quebec) in week 9.
- Canadians travelling outside of Canada are encouraged to consult the [travel health notices](#) for information on measles and rubella outbreaks occurring in other countries.

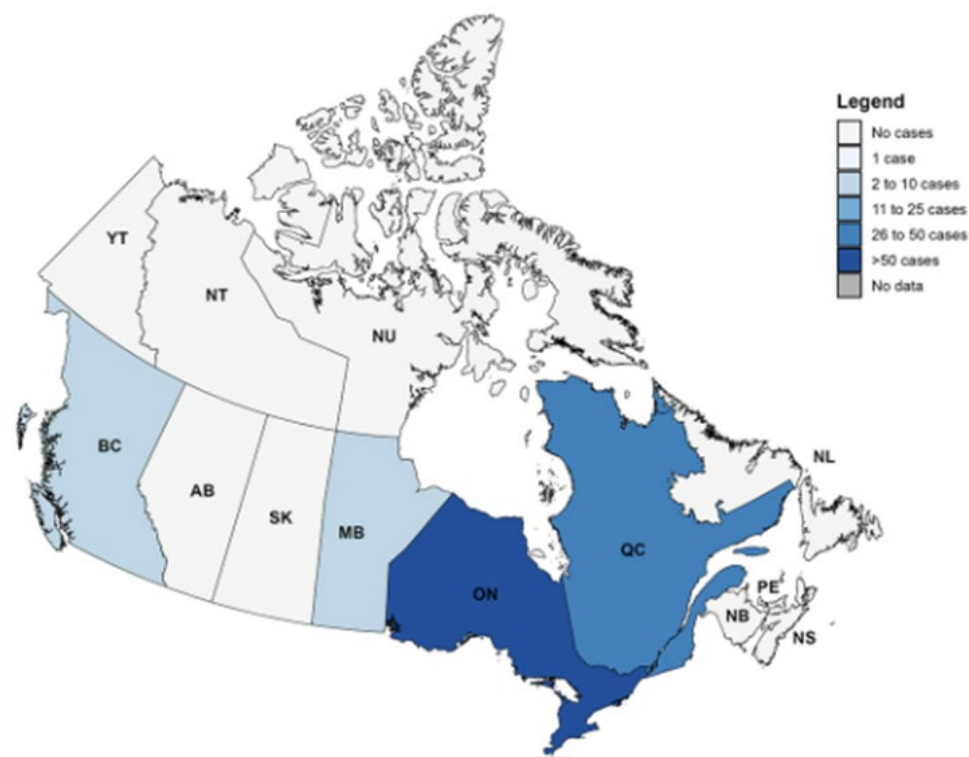
Please note that from week 7 onward, the total case counts of measles presented in "Key Points" include both confirmed and probable cases. This differs from previous weeks, in which only confirmed cases were reported.

Measles

Current measles situation

- In week 9 (February 23 - March 1), 57 new measles cases (28 confirmed, 29 probable) were reported by 2 jurisdictions (Ontario, Quebec). Additionally, 1 measles case with an unknown source of exposure reported by the province of Ontario in week 7 has been discarded following confirmatory laboratory testing.
- To date in 2025 ¹, a total of 224 measles cases (173 confirmed, 51 probable) have been reported by 4 jurisdictions (British Columbia, Manitoba, Ontario, Quebec). Please note, all subsequent sections of the report only include information on confirmed cases.

Figure 1. Geographic distribution of measles cases by province/territory, 2025 ¹ (n=173)



Subject: INFO FROM SRHD - Measles Prevention: Spring Break Travel

Hello School and Child Care Partners,

As Spring Break approaches and measles cases rise in parts of the U.S. and beyond, we wanted to share helpful resources for your parent communications.

MMR Vaccine Communication to Parents

This travel health message can be included in your parent newsletters and communications ahead of Spring Break.

Spring Break Travel Alert: Protect Your Family from Measles

Planning a trip for Spring Break? Measles cases are on the rise both in the U.S. and abroad. [Recent outbreaks](#) have been reported in Texas and New Mexico, with additional cases identified in multiple states, including Florida, California, and New York. Many cases have been linked to international travel, particularly among unvaccinated individuals.

To keep your family safe, ensure everyone is fully vaccinated with the measles-mumps-rubella (MMR) vaccine at least two weeks before departure. For more travel health guidance, visit the [CDC Travelers' Health website](#).

Stay healthy and enjoy your travels!

This CDC video for the public conveys the message as well: <https://youtu.be/mv9LILA8s5M>

Measles Outbreak Simulator Tool

If you are curious to see how a measles case can grow into an outbreak at your school, feel free to play around with the [Measles School Outbreak Projections tool](#) designed to support measles risk communication in Texas schools. While the preset data applies to Texas, you can enter your school's enrollment size and vaccination rate to estimate the likelihood of an outbreak exceeding 20 cases—and how large it could become. Keep in mind that the model assumes no outbreak control measures are in place; if they were, the risk would be lower.

[More about the tool...](#)

[More about measles risk modelling and additional useful figures from CDC...](#)

Upcoming Meeting Reminder

The next Quarterly SRHD/School and Child Care Partners Meeting is April 15 from 2:00-3:00pm. If you have any specific [topics](#) you would like us to include in this meeting, feel free to reach out to vburns@srhd.org

Thank you for your continued efforts in keeping our communities informed and safe!



Education Team

3/24/2025





Community Collaborations

Quality of Life Survey Update

- Invitations to take the survey were mailed to 15,000 random households on March 10th.
- 499 responses to date which is good engagement – higher than the typical response to the initial invitation.
- Two follow-up postcards and a paper copy of the survey will be mailed to those who haven't responded over the next month.
- Data collection will continue through May 30th.
- Convenience sampling in the ZONE and local libraries (Hillyard, Liberty Park, Shadle, and Central) will begin in early April.

Fentanyl Roundtable Collaborations

Announcement: Excelsior Wellness Selected for SHB 1929 Post Inpatient Behavioral Health Transitional Housing Program

NorthStar Advocates is excited to announce that Excelsior Wellness has been selected by the Health Care Authority (HCA) as the first provider for the SHB 1929 Post Inpatient Behavioral Health Transitional Housing program. This marks a significant step forward in ensuring young people exiting inpatient behavioral health care have a structured and supportive transition into stable housing and recovery-focused services.

With Spokane set as the first location for this groundbreaking program, NorthStar Advocates continues to work alongside HCA to identify an additional provider on the **Westside** to expand access to transitional housing. This program is a critical piece in addressing the high rates of homelessness among young people exiting inpatient care, ensuring they receive consistent, high-quality support as they transition back into the community.

Fentanyl Roundtable Collaborations

The **Post System Care Workgroup** is developing a comprehensive **eBook** to serve as a community resource for individuals, families, and providers navigating opioid use disorder (OUD) services in Spokane. This final product will outline the full continuum of services available, ensuring a clear roadmap for recovery and support.

The eBook will include:

- 1. Introduction & Purpose** – Overview of Spokane’s coordinated response to opioid use disorder.
- 2. Crisis & Immediate Support** – Emergency services, crisis response teams, and immediate intervention resources.
- 3. Housing & Transitional Living Support** – Available shelters, transitional housing programs, and supportive living options.
- 4. Substance Use Disorder (SUD) & Behavioral Health Post-Inpatient Services** – Including **Partial Hospitalization Programs (PHP) & Intensive Outpatient Programs (IOP)**.
- 5. Reentry & Legal System Alternatives** – Diversion programs, reentry services, and alternatives to incarceration.
- 6. Extended Foster Care** – Services for young adults aging out of foster care.
- 7. Peer Support** – The role of peer mentors and recovery coaches in long-term success.
- 8. Workforce Development** – Employment support and career pathways for individuals in recovery.
- 9. Community Health Coordination & Managed Care Programs** – How Medicaid, managed care, and community health programs support treatment and recovery.
- 10. Additional Resources** – A directory of key organizations, hotlines, and community services.

Visit Spokane hosted the Washington Health Occupations Students of America (HOSA) the week of March 10

This conference was one of fifteen scheduled multi-venue conventions for 2025. HOSA State Leadership Conference brings together student leaders pursuing careers in the healthcare industry. They will experience health-related training, workshops, competitions and networking at the conference.

Estimated economic impact is \$1,332,899 with 3,400 attendees and 1,745 contracted hotel room nights. Attendees will utilize the Spokane Convention Center, The Davenport Grand Hotel, The Centennial by Davenport Hotels, The Historic Davenport, The Davenport Tower, The DoubleTree by Hilton Spokane City Center, Courtyard by Marriott Spokane Downtown Convention Center, Oxford Suites Spokane, and Hotel Indigo Downtown Spokane.

Medical Reserve Corp members were invited to participate and offered the following education opportunities for the participants:

- Naloxone training
- QPR – Question Pursue and Refer, a suicide prevention training
- General MRC information session
- MRC members judged one the competitive sessions





Questions



Board of Health

March 27, 2025